

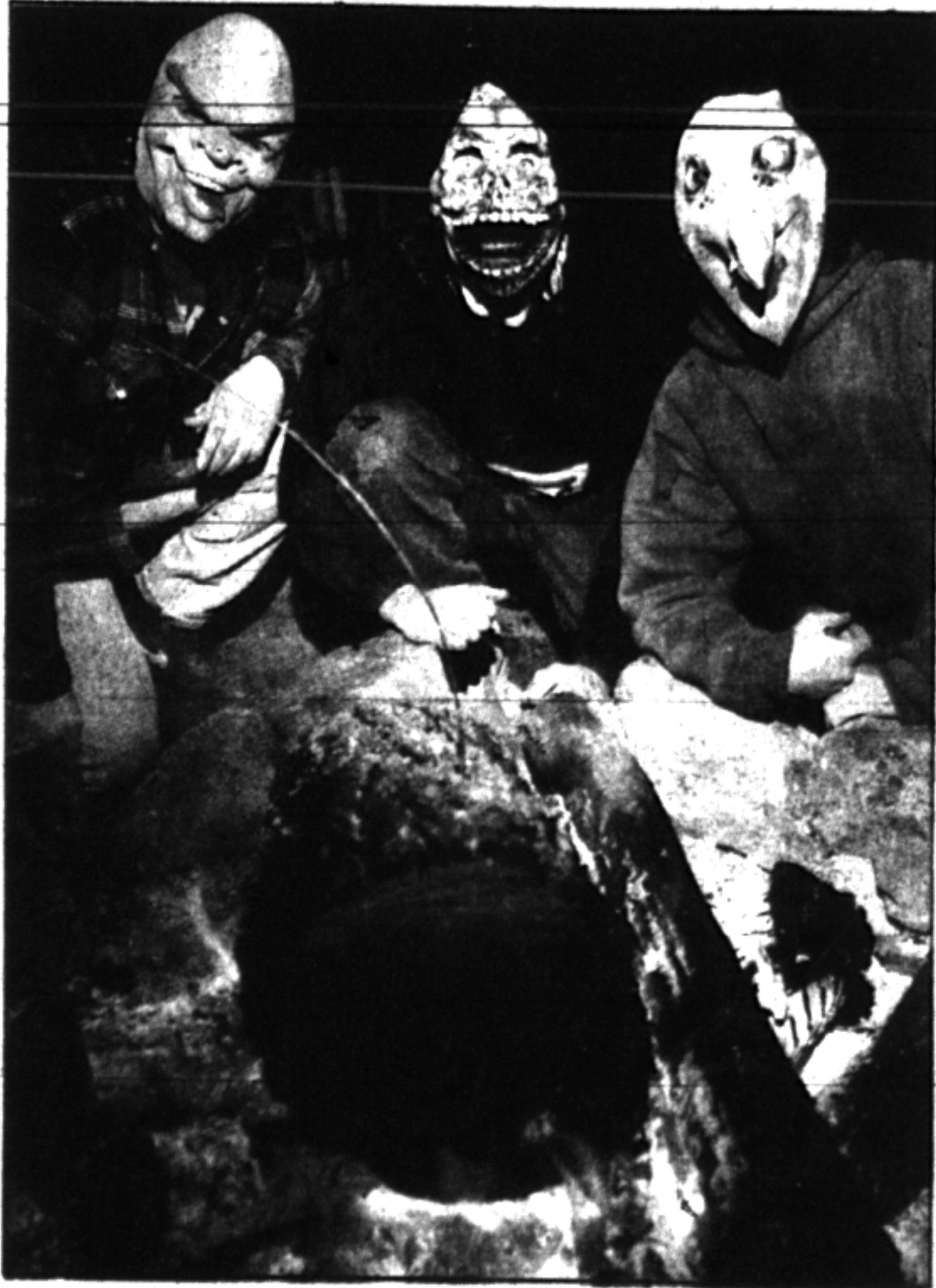
Actress proud to  
play Danielle Steel  
heroine on TV.

Page 43



Friday, October 15, 1993 Page 35

## WEEKEND



Visitors to *Scream in the Dark* at the Bellevue Berry Farm likely will bump into some creepy characters.

Top right—**DETASSELING:** Watch out for Farmer Dracula who is lurking out in the cornfield. He is played by Matt Baker of Yutan.

Top left—**DINNER ANYONE?:** Who knows what these guys have thrown into their cauldron. They are, from left, Scott Hogan of Papillion, Nate Walker and Zack Schaefer of Beaver Lake.

At right—**TOP HEAVY:** One monster, played by Gabe Godsey of Papillion, looks like he has snacked on a few too many unsuspecting tourists.



RICH JANDA/THE WORLD-HERALD

# Things That Go BOO in the Night

## Area Haunted Houses All Set to Scare You

BY MONIKA GONZALEZ  
WORLD-HERALD STAFF WRITER

**A** thin hand emerges from the foreboding darkness of a chilly mid-October night and beckons with a long, bony finger.

As the bewitching hour nears, doors of haunted houses across the Midlands are creaking open — open, that is, to a steady stream of eager Halloween guests. Nonprofit organizations across Nebraska and western Iowa are offering haunted houses and other ghostly gatherings this month. More than 20 are listed here.

**Scream in the Dark** is one of the largest draws. Formerly held at Southroads shopping center, it has moved to the Bellevue Berry Farm off 48th Street and Cornhusker Highway.

As guests turn onto the gloomy gravel road, the first thing that appears in the headlights is a Dead End sign. How appropriate.

The haunted house covers 3½ acres. Its barn and field include a lost gold mine, a graveyard and a jungle maze. Hayrack rides through surrounding wooded areas are

available, depending on the weather.

Gates are open through Oct. 31 from 7 p.m. to 11:30 p.m. Fridays and Saturdays and 7 p.m. to 10 p.m. Sundays, Tuesdays, Wednesdays and Thursdays. The event will benefit Youth Guidance, a division of Omaha Youth for Christ. Admission: haunted house, \$4.50; haunted forest hayrack rides, \$4; house and ride, \$7.50.

Also benefiting Youth Guidance is **Mike Strange's House of Freaks** at the Firehouse Dinner Theater cellar, 514 S. 11th St.

The 13- to 18-minute sideshow is new to Omaha. It lies somewhere between a repulsive magic show and a human version of "Stupid Pet Tricks."

In the show, Strange swallows and regurgitates razor blades on a thread. A young man nicknamed "Slug" eats worms and crickets. "The Human Blockhead" taps a large nail up his nose with a hammer. "Slug" and "Blockhead" then race each other in sucking mint-flavored dental floss up a nostril and out their mouths. And the "Queen of Pain" has more than 20 holes pierced in her body.

The show, which is not recommended for children younger than 12, is open daily except Mondays through Oct. 31. Hours are 7 p.m. to midnight Fridays and Saturdays and 7 p.m. to 10 p.m. Sundays through

Please turn to Page 39, Col. 1